



GIMBALL-TECH

SOLUTIONS pour l'INDUSTRIE

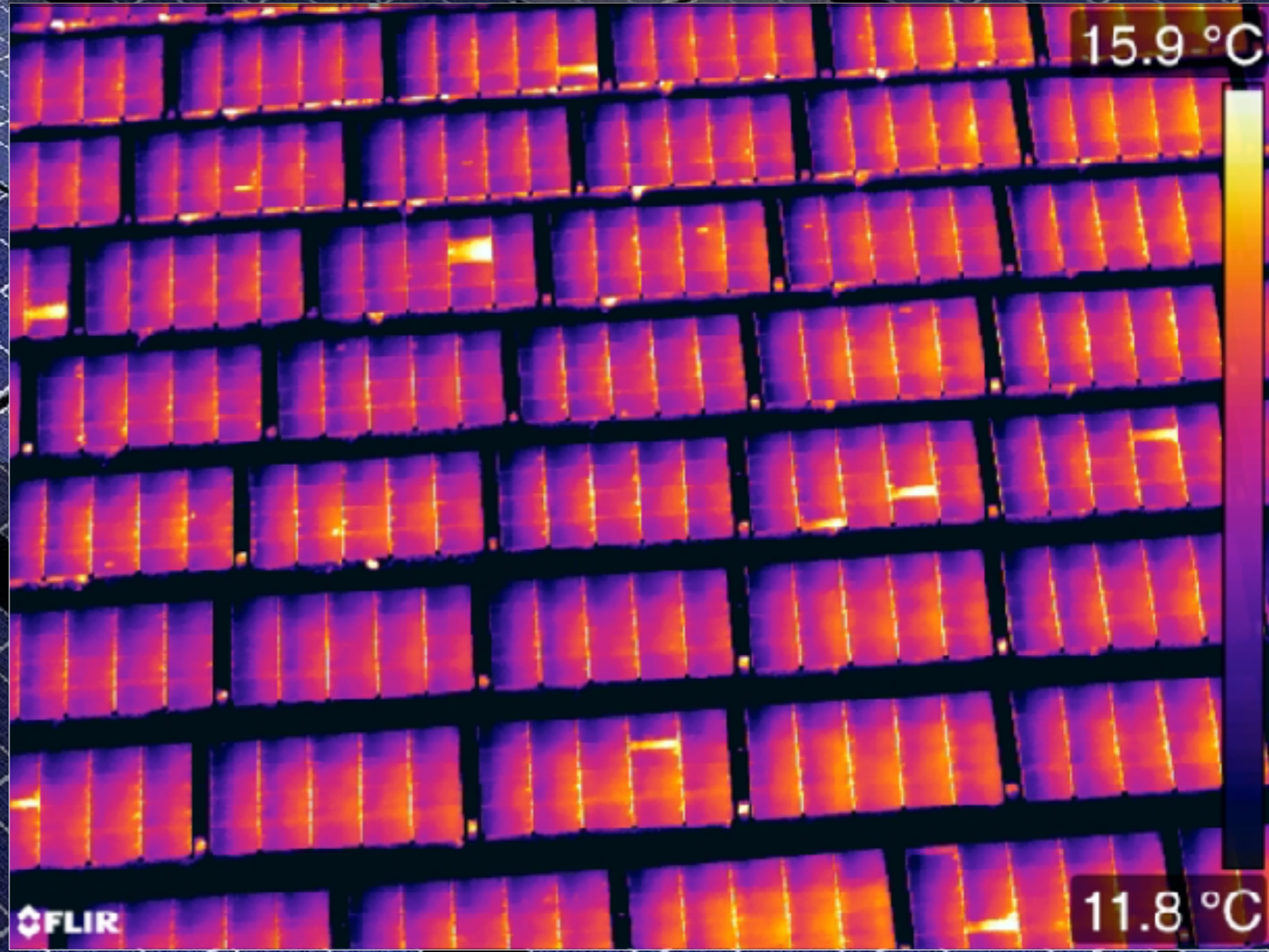
SUMMARY

PHOTOVOLTAIC POWER PLANTS	3 - 4
WIND TURBINE	5 - 6
CIVIL ENGINEERING	7 - 8
SITE MANAGEMENT	9 - 10
3D MAPPING	11 - 12
HIGH VOLTAGE LINES	13 - 14
PARTNERSHIPS	15
RANGE	16
MEDIA	17

DIAGNOSTIC CENTRALES PHOTOVOLTAÏQUES

Détection des pertes de production

Diagnostic de 1ère centrale d'Europe 300MWc en Novembre 2015 (NEOEN - EIFFAGE ENERGIE)



Highlights

- Détection exhaustive
- Analyse et diagnostic SOCOTEC
- Productivité record de 30 MWc / jour / équipe
- Caméra Flir T660 (Vidéo radiométrique)
- 900 MWC analysés en 2015

State of the art **TECHNOLOGY**, unbeatable **PERFORMANCE**



GIMBALL-TECH

WIND TURBINE INSPECTION

Save production, gain relevance...

Highlights

- Divide inspection costs by **5***
- Incomparable precision (0,05mm)
- Independent expertise by Apave engineers

*Average inspection time of 35 mins versus 2H30

GIMBALL-TECH

WIND TURBINE INSPECTION

Safety, speed, low cost, damage prevention, incomparable results...

Usual inspection

- 2:30 production interruption
- 3 engineers
- Long distance photography
- Security devices

Our solution

- 35min production interruption
- 2 operators
- close distance HD photography
- No security device needed

GIMBALL-TECH

CIVIL ENGINEERING INSPECTION

Large scale, micrometrical precision

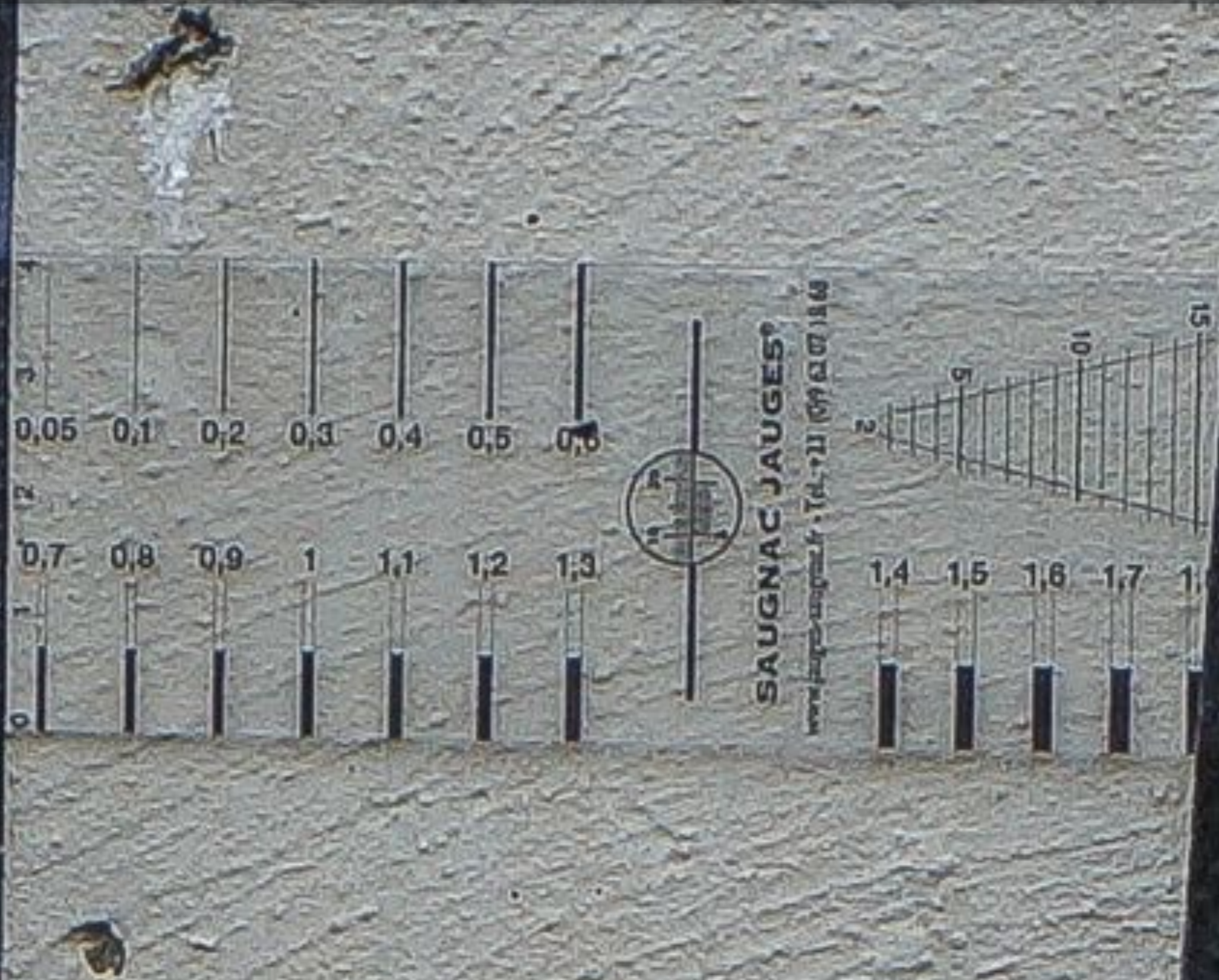
Highlights

- Save Human risk
- Reduced inspection time and costs
- Check the unreachable
- Incomparable precision (0,05mm)
- Independent expertise by Apave engineers

GIMBALL-TECH

0,05mm of precision

An eagle eye...



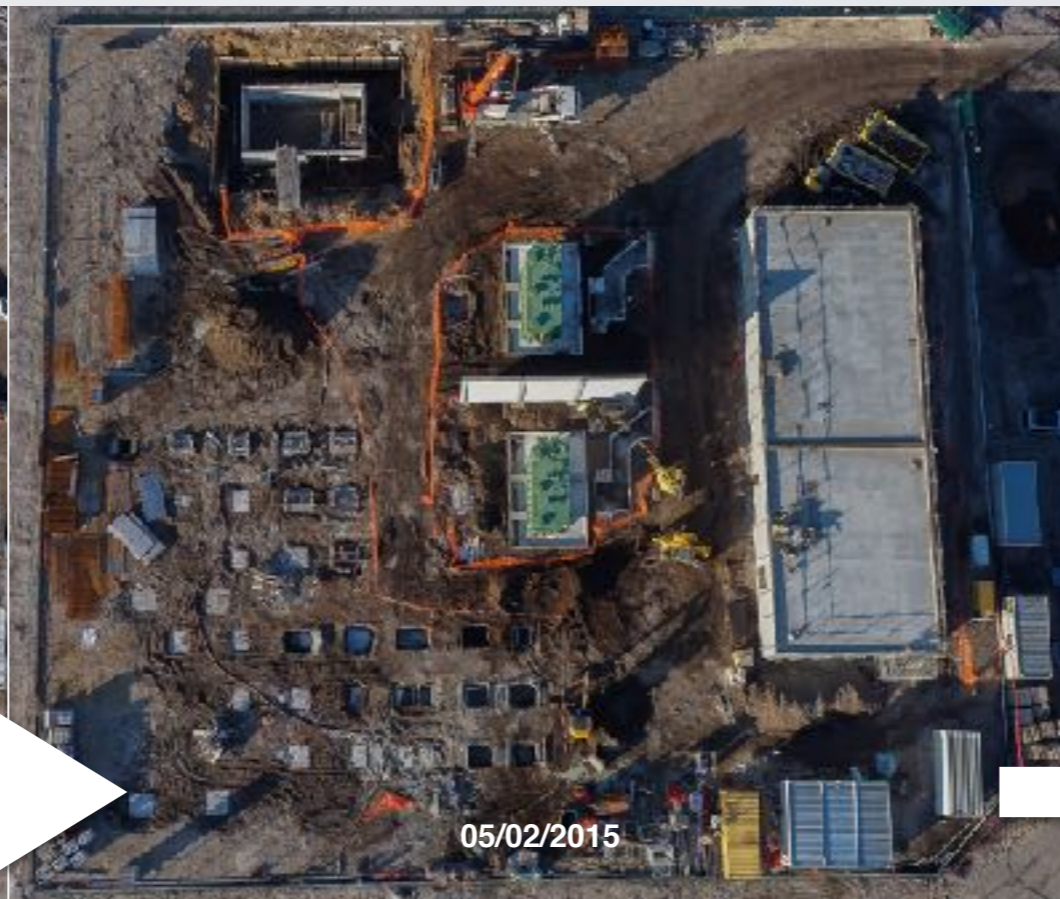
SITE MANAGEMENT

Analyse, communicate, manage...

Highlights

- Precision management
- Weekly detailed reports
- Improve human management
- Communication
- Precision and flexibility

At any time, hold the **right information**



An aerial photograph of a quarry site, showing various pits and roads. A semi-transparent horizontal band is overlaid across the middle of the image. In the top left corner, the text 'GIMBALL-TECH' is above '3D MAPPING'. Below that, the tagline 'Predict, calculate, optimize...' is written in a smaller font. In the bottom left corner, under the heading 'Highlights', there is a list of four bullet points. At the bottom center, there is a small line of text providing technical details about the 3D mapping process.

GIMBALL-TECH 3D MAPPING

Predict, calculate, optimize...

Highlights

- Extreme GPS precision
- 3D CAO integration
- Reduce significantly operating costs
- Improved communication

GIMBALL-TECH

Scan surfaces in 3D for **design offices,**



750 000 structural components have been positioned by GPS with 1 cm of precision using 3D mapping and drones

GIMBALL-TECH

HIGH VOLTAGE LINES

The perfect survey tool for your network

Highlights

- No production interruption
- 100% Safe, no human contact
- Highly productive with more than 70 pylons per day (900 HD pics)
- Data bank with cloud server

Corrosion , quality of connection, extrinsic defects, mechanical defects , vegetation...A post in hard condition, with no pedestrian access.

GIMBALL-TECH

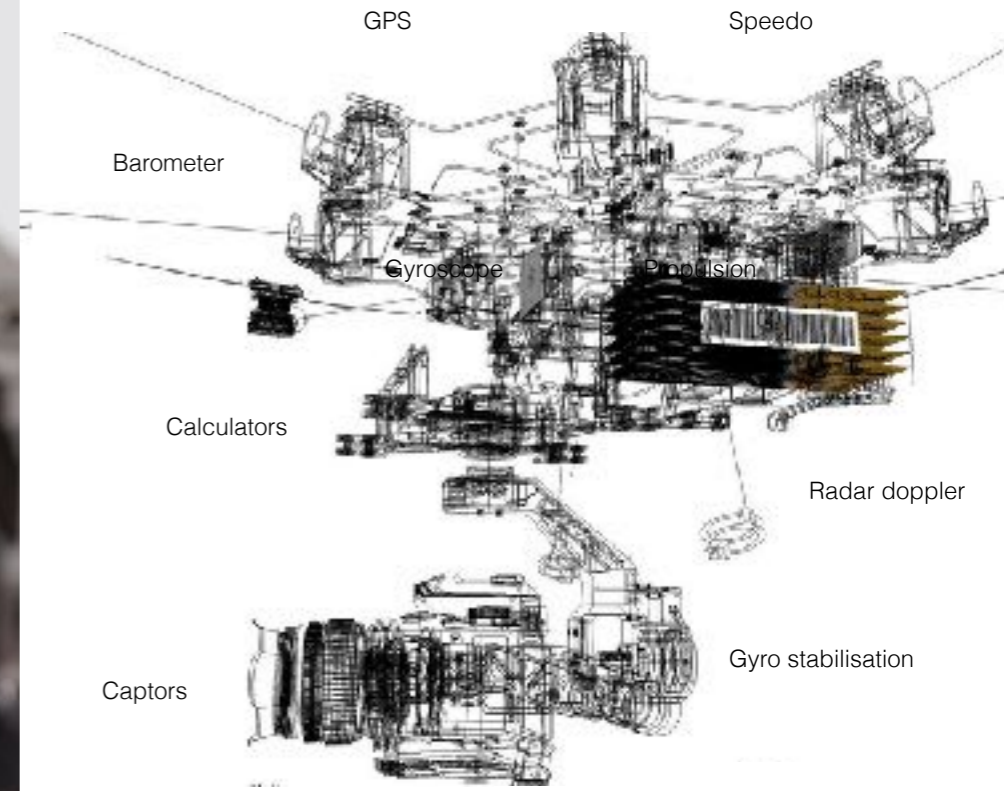
From **20KV** to **400KV**, under power



100 km controlled in tropical mountains (Comoro islands) in 2014 for EDF GROUP. 185 posts (20 KV), 18 pylons (400KV) by 113°F, 98% humidity

TECHNOLOGY PARTNERSHIPS

To offer efficient alternatives, we develop integrated solutions from specification to final expert report.



Specifications

GIMBALL-TECH

Operator



Technology



Analyse

MEDIA

300
MWc

[Click on to watch the video](#)

REFERENCES

GROUP BENETEAU - EIFFAGE BTP - ERDF - RTE - EDM - NEOEN - TF1 - PENFOLDS AUSTRALIA - KENDALL JACKSON CALIFORNIA - GRAND ANGLE CORPORATE - ECRANS DU MONDE - USHUAIA TV - CAMERALUCIDA - AMEL YACHTS - MERCURY MARINE - CLYD - BARNES INTERNATIONAL - URBASOLAR - EOLE RES - SCHNEIDER ELECTRIC - DUFOUR YACHTS - QUIKSILVER - SEA BLUE SAFARI - EUROMOTORBIKE - FRANCE TELEVISION - CLEMESSEY SA - WILLIS&WILLIS - GRAND STADE DE BORDEAUX - ANTIPODE PRODUCTION - K SILICIUM - VALMONT INDUSTRIES - PHOTOSOL - URBASOLAR - RES - EIFFAGE ENERGY - SCHNEIDER ELECTRC - GRAS SAVOYE (MARSH) - ONERA...



Take off - Dufour yachts - Athens - 2014

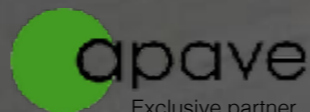
Gimball
PROD



The World's **Sixth Sense™**

ONERA

THE FRENCH AEROSPACE LAB



Exclusive partner



website : www.gimball-prod.com

Facebook : <https://www.facebook.com/pages/Gimball-Prod/432507070191240?ref=t>

VIMEO channel: <https://vimeo.com/channels/589560>

Contact : Fabien.vagnot@gimball-prod.fr

(+33) 7 82 52 37 60